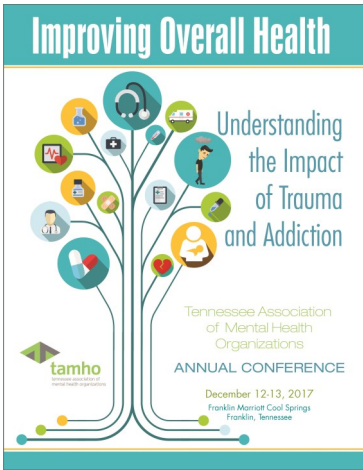




tamho

tennessee association of
mental health organizations

REQUEST FOR DOCUMENTATION OF CONTINUING EDUCATION CONTACT HOURS EARNED



Individual certificates will not be provided on-site at the TAMHO 2017 Annual Conference. A certificate indicating the hours earned and the sessions attended will be provided upon request. To obtain a Certificate of Continuing Professional Development for the session(s) you attend, please complete this form, include your signature, and return it to the conference registration desk or forward it to the TAMHO office by email (tamho@tamho.org) or facsimile (615-254-8331). Be sure you complete evaluation forms online. Links are available at www.tamho.org/tamho-annual-conference. A certificate will be forwarded to you. Please allow four (4) to six (6) weeks for receipt.

Name: _____

Academic Credential(s): _____

Title: _____

Affiliation: _____

Address: _____

City, State, Zip Code: _____

Telephone: _____

Fax: _____

Email: _____ Signature: _____

Please indicate the hours you earned by checking the box next to the sessions attended.
Tally the total hours earned and drop your request at the conference registration desk.

DAY 1

Tuesday, December 12, 2017

- 9:00 am – 10:30 am | OPENING GENERAL SESSION | FROM THE DARKNESS OF COLUMBINE AND ADDICTIONS INTO THE LIGHT OF RECOVERY — AN OPPORTUNITY TO EXPLORE ADDICTION AND RECOVERY WITH TRAUMA [1.5 CONTACT HOURS]
- 10:45 am – 12:15 pm | GENERAL SESSION | ADDICTIONS IN TENNESSEE: TDMHSAS' RESPONSE [1.5 CONTACT HOURS]
- 1:45 pm — 3:15 pm | GENERAL SESSION | BECOMING A TRAUMAINFORMED CHILD SERVING SYSTEM: THE IMPACT ON MENTAL HEALTH AND SUBSTANCE ABUSE SERVICES FOR AT-RISK YOUTH [1.5 CONTACT HOURS]
- 3:30 pm — 5:00 pm | GENERAL SESSION | PROVIDER PERSPECTIVE: SPECIALTY ADDICTION AND CO-OCCURRING SERVICES FOR PREGNANT WOMEN [1.5 CONTACT HOURS]

DAY 2

Wednesday, December 13, 2017

- 8:30 am – 10:00 am | GENERAL SESSION | CONNECTING THE DOTS — TRAUMA, ADDICTION, AND RECOVERY [1.5 CONTACT HOURS]
- 10:45 am – 12:15 pm | CLOSING GENERAL SESSION | TOGETHER AT LAST — ADDICTION MEDICINE AND THE BEHAVIORALLY ENHANCED HEALTHCARE HOME [1.5 CONTACT HOURS]

TOTAL CONTACT HOURS
EARNED: _____

Maximum of 9.0 total conference contact hours available

