

# First Episode Psychosis Conference

Walking Together on the Road to Recovery

## Family and Young Adults . . .

Walking Together on the Road to Recovery

### INTRODUCTORY REMARKS

*Jessica Mullins, LMSW, Assistant Director of Child and Youth Mental Health, Tennessee Department of Mental Health and Substance Abuse Services, Nashville, Tennessee*

### SPEAKER INTRODUCTION

*Jeff Fladen, Executive Director, NAMI Tennessee, Nashville, Tennessee*

### SPEAKER

*Maureen Harrigan, Family Advocate, Elkridge, Maryland*

### PANELISTS

#### Alliance HealthCare Services

*A. Elise Tanner, LCSW, FEPI Team Leader  
Family Representative(s)*

#### Mental Health Cooperative

*Kevin DeKock, MSW, FEPI Team Leader  
Family Representative(s)*

# First Episode Psychosis Conference

Walking Together on the Road to Recovery

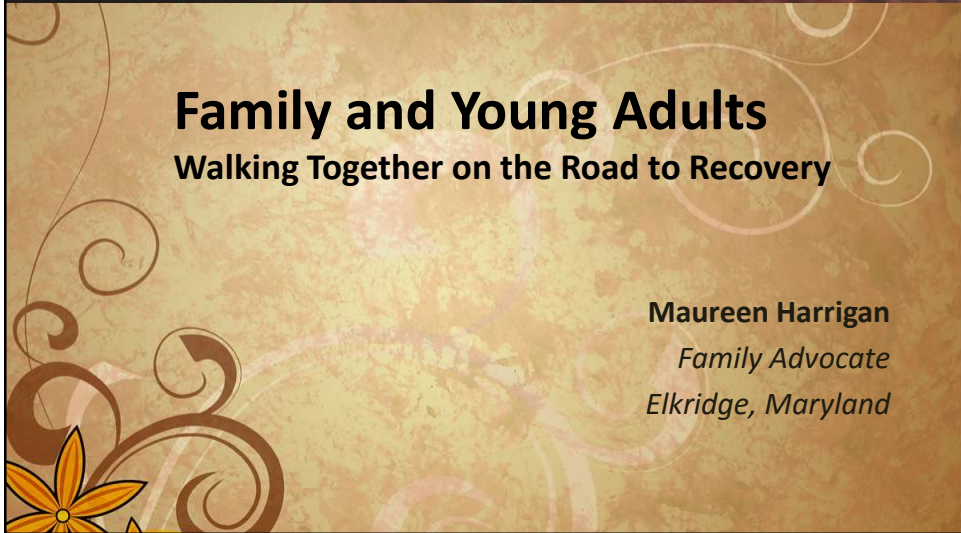
## Family and Young Adults

Walking Together on the Road to Recovery

**Maureen Harrigan**

*Family Advocate*

*Elkridge, Maryland*





# First Episode Psychosis Conference

Walking Together on the Road to Recovery

## Family and Young Adults . . . Walking Together on the Road to Recovery

### SESSION EVALUATION LINK

GENERAL SESSION | Family and Young Adults ... Walking Together on the Road to Recovery

<https://www.surveymonkey.com/r/WalkingTogether>

### OVERALL CONFERENCE EVALUATION

<https://www.surveymonkey.com/r/FirstEpisodePsychosisConference>